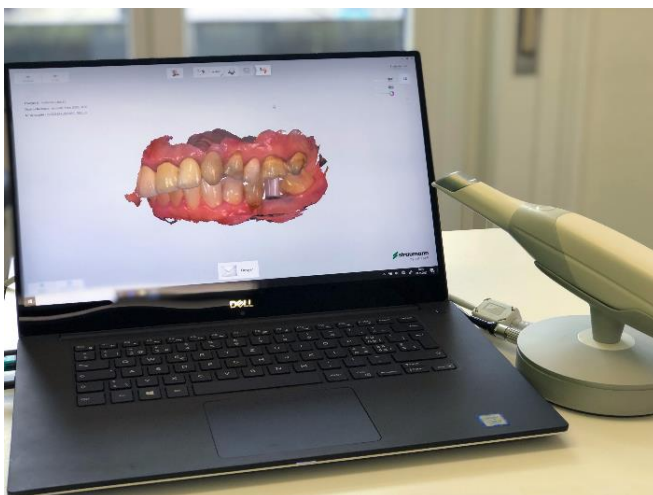


Patient information

Digital dental impression

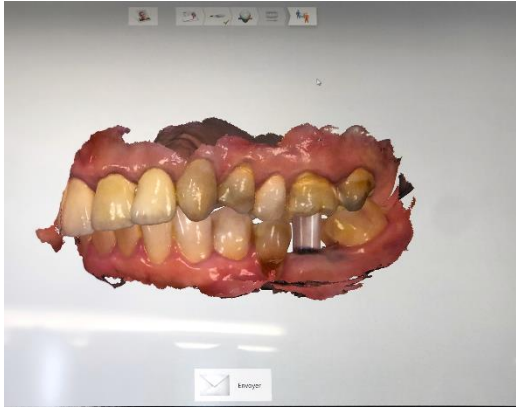


Digital dental impression with an intraoral scanner provides a variety of advantages throughout the workflow of taking the impression to finishing the piece of work. For the impression is the junction between the dentist and the dental laboratory.



Digital dental impression is a modern 3D technology, which we employ in our dental practice when ever possible (for example for crowns, bridges, veneers, inlays, onlays, partial crowns or for dental restorations on implants, partial denture with a metallic base as well as for dental splints).

It replaces more and more the conventional dental impression using a tray with putty and allows a more pleasant patient experience for instance by helping to avoid an unpleasant gag reflex.



A digital impression is very precise and prevents various potential sources of errors.

This sophisticated technology allows optimising the crosslinking between the dentist and the dental laboratory by digitalising the whole process from the taking the impression to finishing the work.

The patient benefits from various advantages:

- Taking an impression is going to be much more comfortable. Sedation or anaesthesia of the throat is not necessary anymore.
- The digital production process increases the precision of a piece of dental work.
- In addition, the dental technician can finish his pieces of work much quicker due to the digital technology. Hence, the laboratory price is lower.
- Therefore, the time between taking the impression and putting a dental piece of work in place can be reduced.

Your dental practice Dr. Bianca Cordey-Rosenkranz